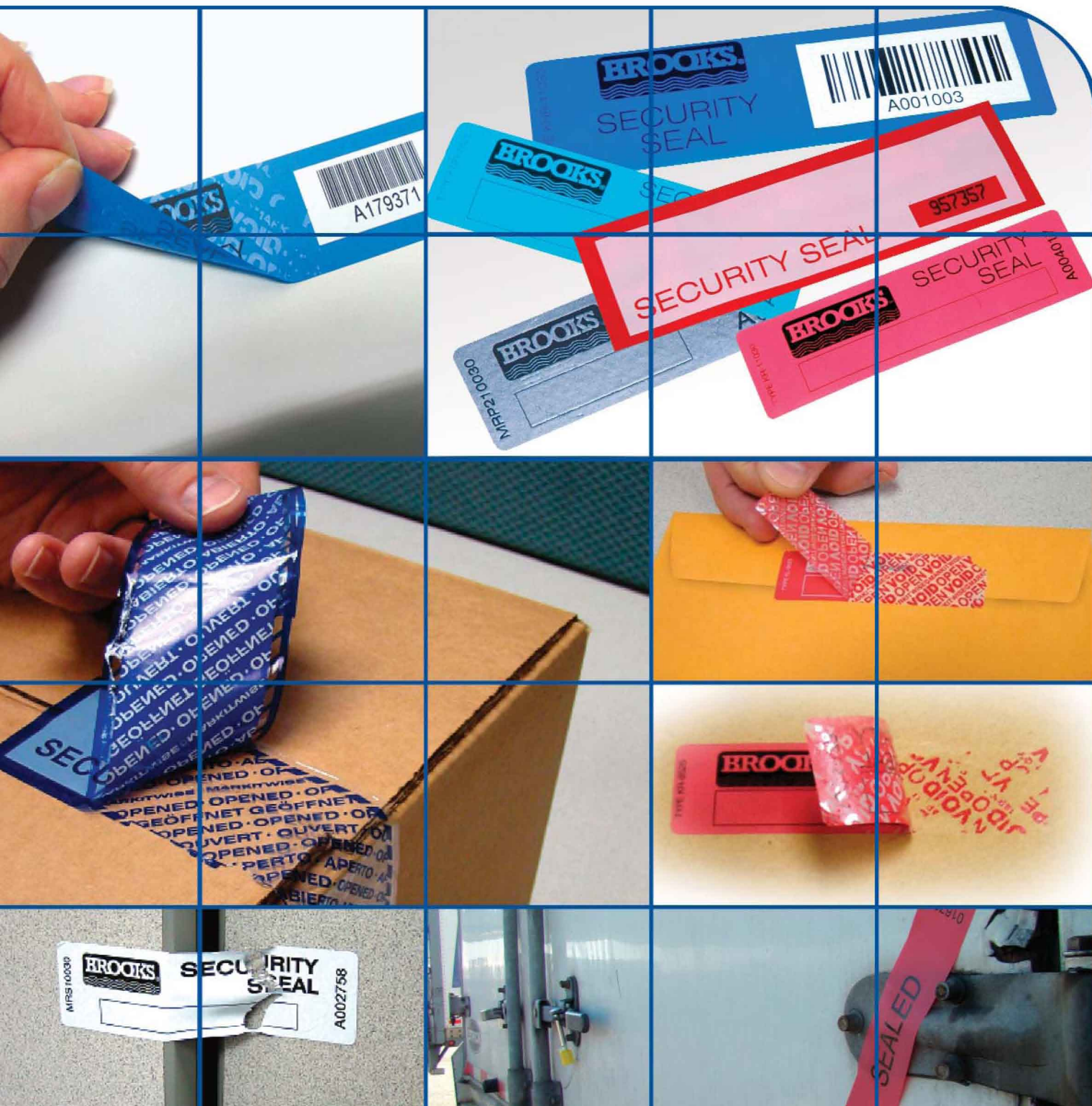




TydenBrooks™

LEADING THE WAY • SECURING THE WORLD

Tamper Indicative Labels, Tapes, and Anti-Counterfeit Products



Tamper Evidence That's Unmistakable

When applied, security tape and labels are of a single, uniform color with standard or custom imprinting. However, should an attempt be made to remove them, an unalterable message appears either on the tape, or on the taped surface, making it obvious that a tampering attempt has occurred. The tape or label cannot be reapplied without the tampering attempt being very obvious.

To meet your specific security requirements, BROOKS Tamper-Indicative Labels and Tape are available in many varieties. Several of the most popular designs are featured here. BROOKS is known throughout the world as the premier supplier of tamper evident and theft preventive security seals and locking devices. We're dedicated to providing you with the finest selection of quality products to meet your exacting security requirements.

TAMPER EVIDENT SECURITY LABELS WITH SECURITY MESSAGE

Type KNR

(Unique Non-Residue)

Common application: Wherever both security and aesthetics are required, for example, air cargo security doors.

- Reveals prominent security message on label when lifted or removed without leaving a residue on the surface.
- For metallic, plastic and smooth surfaces.
- Mylar polyester with strong adhesive, labels supplied on a release liner in rolls.
- Stock red and blue or custom printing and consecutive numbering.
- Custom colors available.
- Optional bar coding (any of 3 different symbologies) or dual number tab for tracking purposes.



Type		Dimensions	Labels/ Roll	Rolls/Master Carton	Min. Order
Stock	KNR8525	3-3/8" x 1"	1000	24	1 roll
	KNR11030	4-5/16" x 1-3/16"	1000	12	1 roll
Custom-print	KNR5520	2-3/16" x 3/4"	1000	48	3 rolls
	KNR8525	3-3/8" x 1"	1000	24	3 rolls
	KNR11030	4-5/16" x 1-3/16"	1000	12	3 rolls

Application Example: **Temporarily Control Camera Use**

Any institution or company that is involved in technology or research and development, such as defense contractors, firearms manufacturers, breweries/distillers should be aware of the security risks posed by cell phone cameras during:

- Plant Tours
- Private Presentations
- Entertainment Events
- R&D Projects

Here is a simple solution... place a Brooks Type KNR tamper-evident label across the camera lens. It will not leave a residue but will provide a message visible to security personnel that the label was removed and possibly the camera feature was used in the restricted area.



Type KNR Laboratory Label

Application: Test tubes and specimen vials

- Prevents tampering and contamination of laboratory specimens, validates chain of custody.
- Reveals security message on label if there is any attempt to remove the label, but leaves no residue on the surface.
- Standard duplicate number tab and any of 3 bar code symbologies with consecutive numbering.
- Stock red or blue, can be customized.

Type	Dimensions	Labels/ Roll	Rolls/Master Carton	Min. Order
KNR13515	5-3/8" x 5/8"	250	96	12 rolls



Type KR

(Removable, Adhesive Residue)

Common application: Anywhere a security message on the surface is acceptable, for example,

- Designed for applications where the residue of a security message on the surface is desired when the label is lifted or removed; however, residue is easily removed.
- Label can be written on with ballpoint pen or marker.
- Stock red and blue or custom printing, bar-coding.
- Custom shapes, colors, sizes.

Type		Dimensions	Labels/ Roll	Rolls/Master Carton	Min. Order
Stock	KR8525	3-3/8" x 1"	1000	24	1 roll
	KR11030	4-5/16" x 1-3/16"	1000	12	1 roll
Custom-print	KR5520	2-3/16" x 3/4"	1000	48	3 rolls
	KR8525	3-3/8" x 1"	1000	24	3 rolls
	KR11030	4-5/16" x 1-3/16"	1000	12	3 rolls



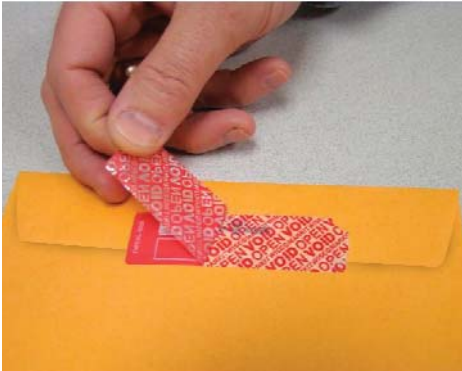
Type KL

(Laminate Residue)

Common Applications: Document envelopes, fiber cartons and plastic packaging.

- Turn an ordinary envelope into a security envelope for critical documents.
- Label permanently delaminates when lifted, leaving void message.
- Write-on panel.
- Stock red or custom printed.
- Custom shapes and sizes.

Type		Dimensions	Labels/ Roll	Rolls/Master Carton	Min. Order
Stock	KL8525	3-3/8" x 1"	1000	24	1 roll
	KL11030	4-5/16" x 1-3/16"	1000	12	1 roll
Custom-print	KL8525	3-3/8" x 1"	1000	24	3 rolls
	KL11030	4-5/16" x 1-3/16"	1000	12	3 rolls





Container/Trailer Label (Adds a layer of security)

Common Application: Truck or container doors and hinges (hinges need to be protected since they can be removed without disturbing the door seal).

- Large 9" x 2" size.
- Similar to Type KR that leaves a residue on the surface if the label is lifted.
- Suitable for environmental extremes.
- Stock red, consecutively numbered, printed "SEALED".
- Can be customized.

Type		Dimensions	Labels/ Roll	Min. Order
Stock	KR22550	9" x 2"	1000	1 roll
Custom-print	KR22550	9" x 2"	1000	3 rolls

TAMPER-EVIDENT ASSET PROTECTION LABELS, DESTRUCTIBLE TYPE



Type MRS2

Common Application: Anywhere there are uneven joining or moving surfaces, for example, fire doors.

- Pliable vinyl label that will stretch if force is applied against it.
- Frangible security cuts on either side of label will self-destruct.
- Optional dual numbering tabs for tracking.

Type		Dimensions	Labels/ Roll	Rolls/Master Carton	Min. Order
Stock	MRS28525	3-3/8" x 1"	1000	24	1 roll
Custom-print	MRS28525	3-3/8" x 1"	1000	24	3 rolls
	MRS212030	4-3/4" x 1-3/16"	1000	12	3 rolls



Type MRP2

Common Application: Identification of company assets, for example, computers.

- Polyester foil label with aggressive adhesive.
- Frangible security cuts on either side of label will self-destruct if disturbed.
- Resistant to environmental changes.

Type		Dimensions	Labels/ Roll	Rolls/Master Carton	Min. Order
Stock	MRP28525	3-3/8" x 1"	1000	24	1 roll
Custom-print	MRP28525	3-3/8" x 1"	1000	24	3 rolls
	MRP212030	4-3/4" x 1-3/16"	1000	24	3 rolls

TAMPER-EVIDENT SECURITY TAPE



Type KTB Tape (Tamper evidence with the look of ordinary packaging tape)

- Looks like ordinary brown packaging tape but delaminates if removed leaving a security message.
- Treated tape surface does not allow other tapes to adhere to it.

Type		Dimensions	Rolls/Case	Min. Order
Stock	KTB	98' x 2" roll	72	1 case



Type KTC Tape (Continuous roll for tape dispenser)

- Delaminates leaving a security message on the taped surface if tampering occurs. (delamination also eliminates possibility of re-sealing)
- Treated tape surface does not allow other tapes to adhere to it.
- Stock blue.
- Custom colors and printing with your logo along entire length.

Type		Dimensions	Rolls/Case	Min. Order
Stock	KTC	162' x 2" roll	36	1 case
Custom-print	KTC	162' x 2" roll	36	30 cases



Type KTE Tape (Perforated 6" strips)

- Delaminates leaving a security message.
- Treated tape surface does not allow other tapes to adhere to it.
- Stock blue.
- Custom colors and printing with your logo.

Type		Dimensions	Rolls/Case	Min. Order
Stock	KTE	162' x 2" roll	36	1 case
Custom-print	KTE	162' x 2" roll	36	30 cases



Type KTW Tape (Specially designed for wood)

- Similar to Type KTE Tape but has a special adhesive for wood and wax-coated corrugated boxes.
- 6" perforated strips or continuous roll.
- Can be customized.

Type		Dimensions	Rolls/Case	Min. Order
Stock	KTW	98' x 2" roll	36	1 case



Type PTE Tape (Economical with security-like feature)

- Multiple diagonal lines cannot be re-aligned if tape is cut.
- Supplied on continuous rolls.
- Can be customized with your logo on entire length.

Type		Dimensions	Rolls/Case	Min. Order
Stock	PTE	330' x 2" roll	36	1 case
Custom-print	PTE	330' x 2" roll	36	1 case



ANTI-COUNTERFEITING PRODUCTS

Now you can add an anti-counterfeiting feature to any of our security labels. Brooks has the capability of adding a non-toxic taggant to our security labels and tapes that,

with a sensor provided, will give both a visual and audible indication if the label/tape is genuine. Ask a Brooks representative about this unique feature.



Type KC Label

(Covert tamper evidence)

Common Application: Police surveillance

- Clear vinyl label with aggressive adhesive.
- Requires UV light source which reveals a void message if the label is lifted or tampered with.
- Overprinted with UV-visible text (your logo) and sequentially numbered.
- Custom sizes available.

Type		Dimensions	Labels/Roll	Min. Order
Stock	KC8525	3-3/8" x 1"	1000	1 roll
Custom	KC8525	3-3/8" x 1"	1000	3 rolls

IdentiLite™ UV Mini-Light

Used to detect ultra-violet markings on property as well as many of the security elements incorporated into bank notes, checks, driving licenses, passports, credit cards, visas and other official documents.

- High energy UV light source (385 nm) for detecting UV marks.
- Brushed steel housing which can be personalized.
- Supplied with 2 replaceable flat cell batteries.

Description	Pkg Count	Master Carton Count	Min. Order
UV Mini-Lite	9552000	12	144

Counterfeit Currency Detection Kit

Common Application: Cash-in-transit

For authenticating cash in 2 ways:

- 1) Holograms, watermarks in currency will be visible.
- 2) When currency is marked with the ID pen, a dark mark will indicate counterfeit (pen ink will react with normal paper but not paper used for authentic currency).

- Usable on most forms of currency.
- Includes UV light and detector pen.

Description	Pkg Count	Master Carton Count	Min. Order
Counterfeit ID Kit	9550000	12	144

UV Property Marking Kit

Common Application: Asset protection

- Permanent UV security marker for all surfaces indoors and outdoors.
- Includes marker and UV light.

Description	Pkg Count	Master Carton Count	Min. Order
UV Property Marking Kit	9560000	12	144

